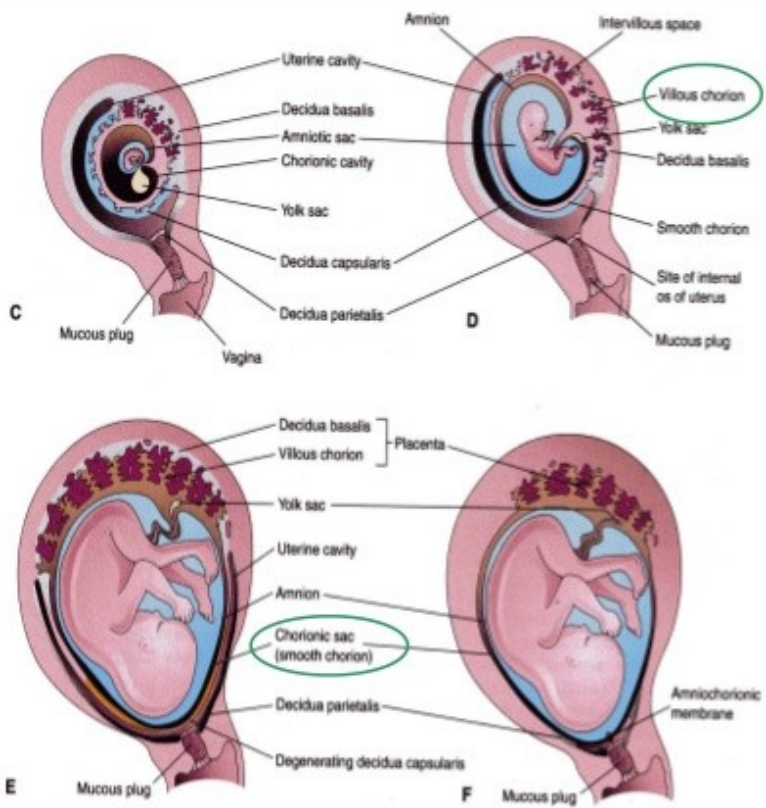


STUDY OF DIFFERENT TYPES OF PLACENTA

(PRACTICAL)

~ PRITHA MONDAL ; Asstt. Prof. in Zoology, SNC.

DEVELOPMENT OF PLACENTA



- Until the beginning of the 8th week, the entire chorionic sac is covered with villi.
- After that, as the sac grows, only the part that is associated with Decidua basalis retain its villi.
- Villi of Decidua capsularis compressed by the developing sac.
- Thus, two types of chorion are formed:
 - **Chorion frondosum** (villous chorion)
 - **Chorion laeve** – bare (smooth) chorion
 - About 18 weeks old, it covers 15-30% of the decidua and weights about 1\ 6 of fetus

7

Fig. no. : 1

- ❖ Observation of different parts of the “PLACENTA”.

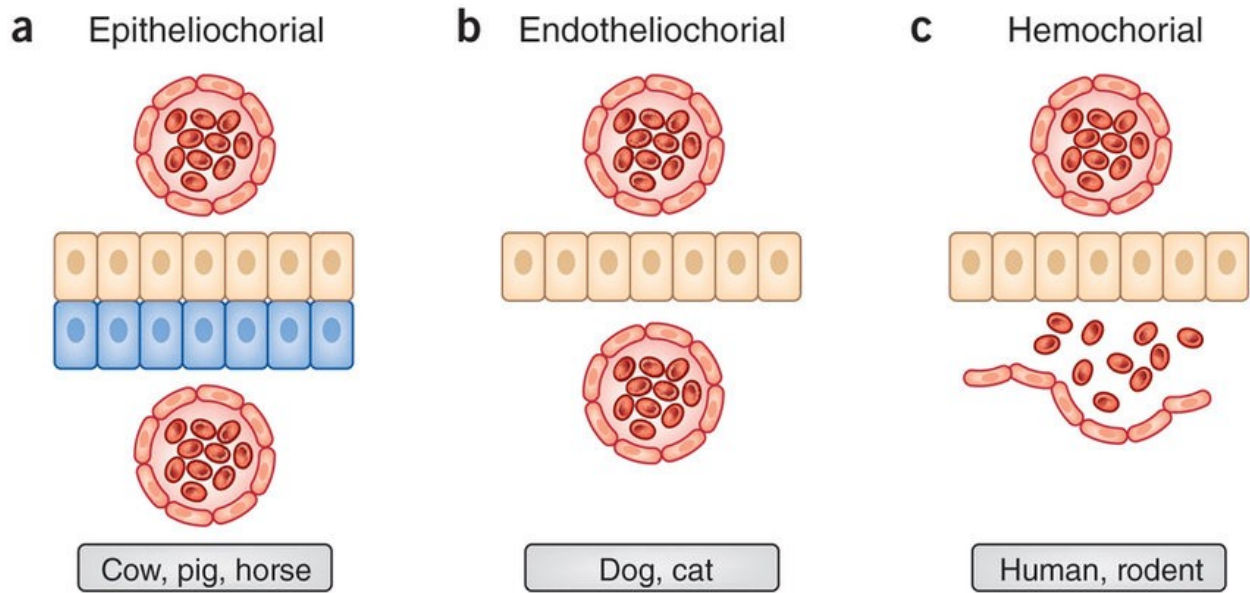


Fig. no. : 2

❖ Different types of PLACENTA on the basis of association of tissues.

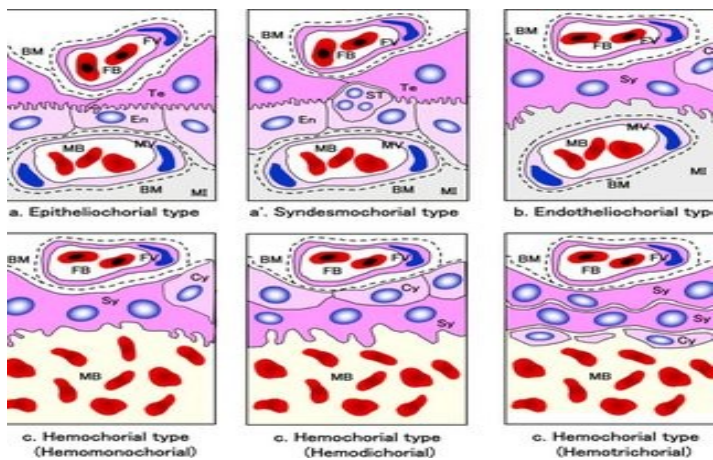


Fig. no. : 3

❖ Histology of different types of PLACENTA.

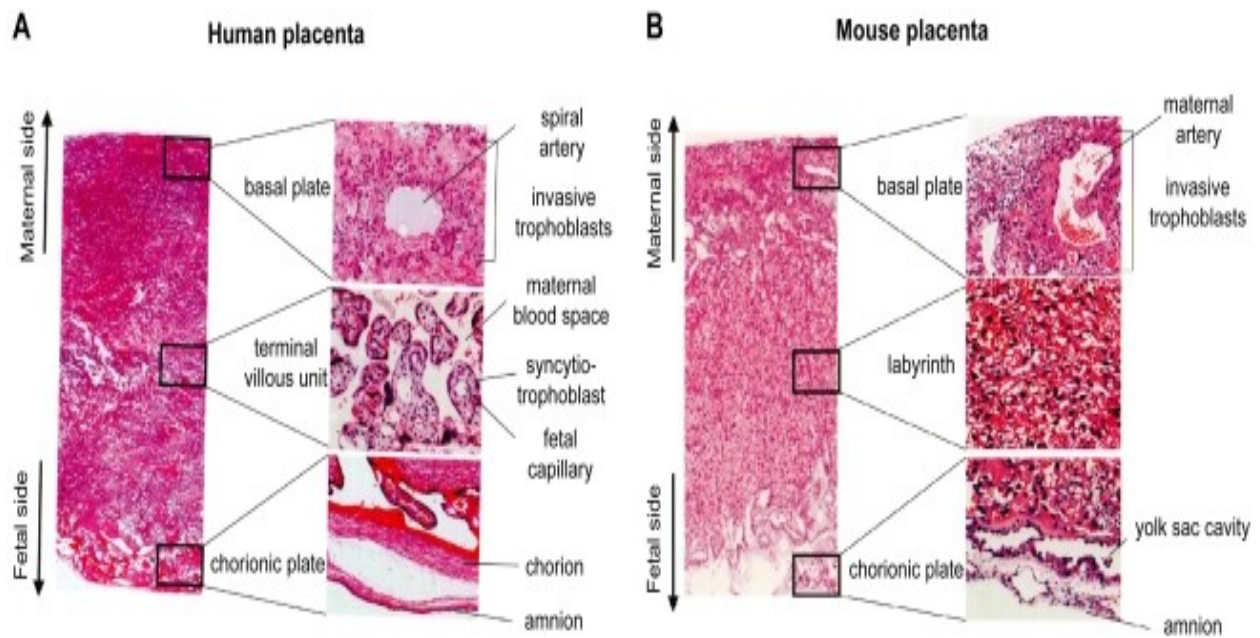


Fig. no. : 4

❖ Histological section of Human & Mouse Placenta.

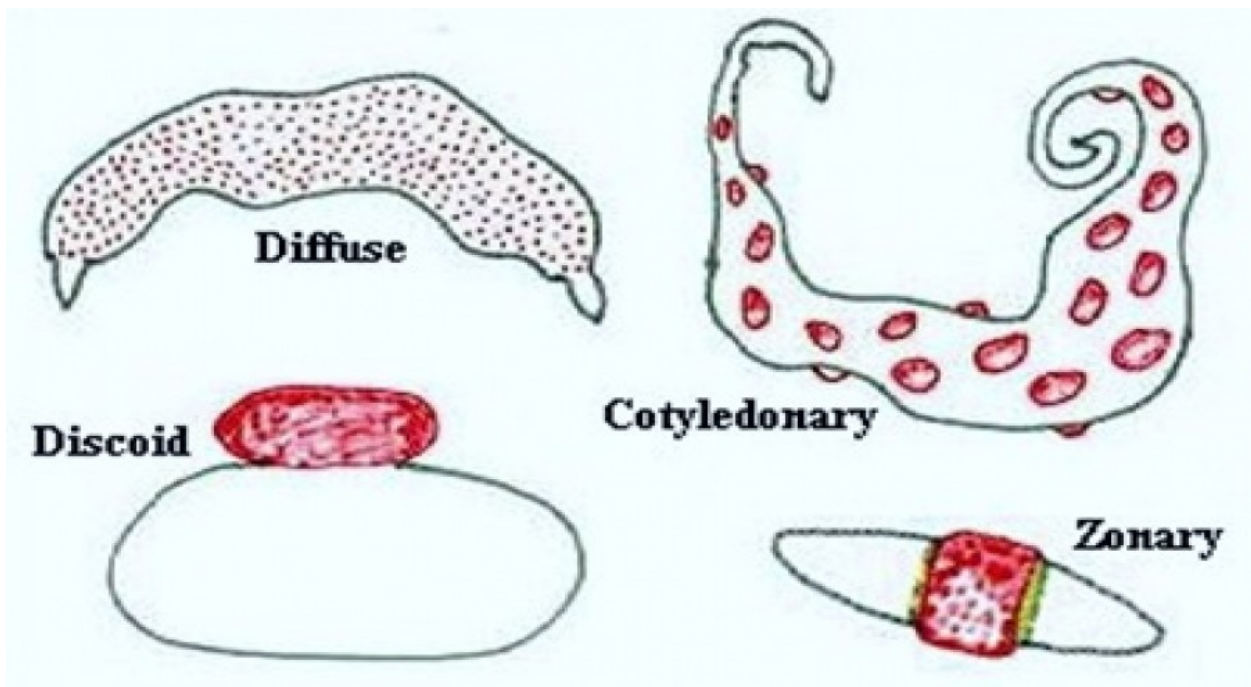


Fig. no. : 5

❖ Different types of Placenta on the basis of distribution of villi.

□ [Ref. : Internet source & e-journal.](#)